

INSTALLATION

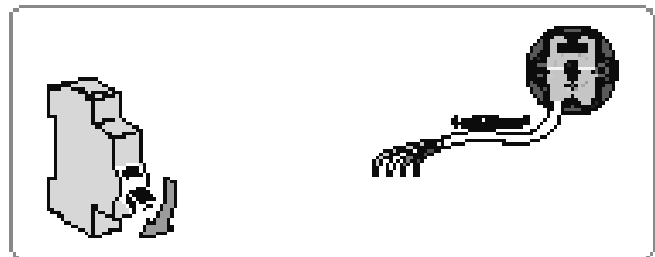
- Follow the hanging instructions to hang your shutter.
- The instructions are for use by a qualified home motorisation and home automation professional.
- Never drop, knock or puncture the motor or immerse it in liquid.
- Install an individual control point for each motor.
- If you encounter a problem during installation refer to the troubleshooting flowchart.

1. Wiring

The motor can only be connected to the power supply by a qualified electrician.

- 1) Cut off the mains power supply.
- 2) Connect the motor according to the information in the table below:

Neutral	Blue
Live	Brown
Live	Black
Earth	Yellow/Green



2. Commissioning

To commission the motor, a RTS control point must be programmed.

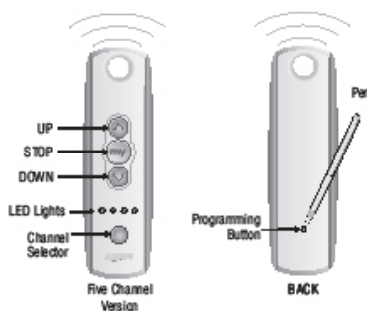
BEFORE PROCEEDING ENSURE THAT ONLY ONE MOTOR IS POWERED AT A TIME. FAILURE TO DO SO WILL RESULT IN MOTORS BEING DESYNCHRONISED.

3. Programming the Control

Switch on the power supply to the shutter you wish to program.

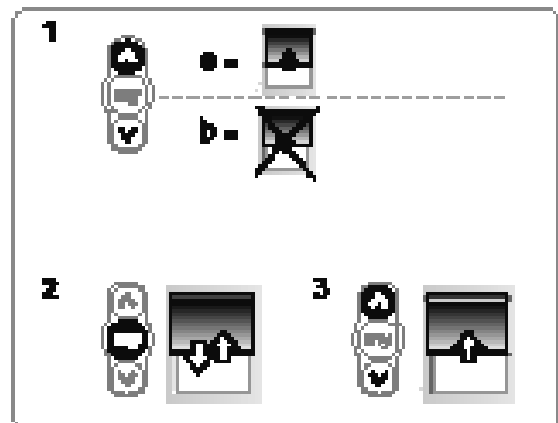
Select the desired channel on the remote (the LED will illuminate to indicate the selected channel)

Press the UP and DOWN buttons simultaneously on the remote: the shutter will jog (move up and down briefly) to indicate that the remote is linked to the motor and the motor is in programming mode.



4. Checking the direction of rotation

Press the down button on the remote, if the shutter moves down the direction of rotation is correct, proceed to step 5. If the shutter moves up the direction of rotation is incorrect. To fix this press the Stop/My button on the remote until the shutter jogs to indicate the direction has been reversed. Check the direction is now correct by repeating this step (step 4).

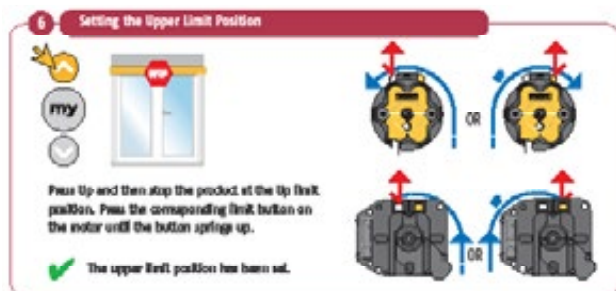


5. Adjusting the end limits

The limits can be set in any sequence. The exact method will vary based on the motor model you have, this changes with shutter size.

Up limit

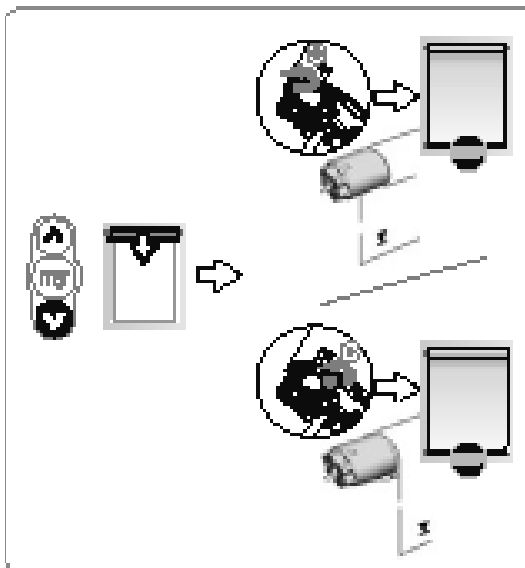
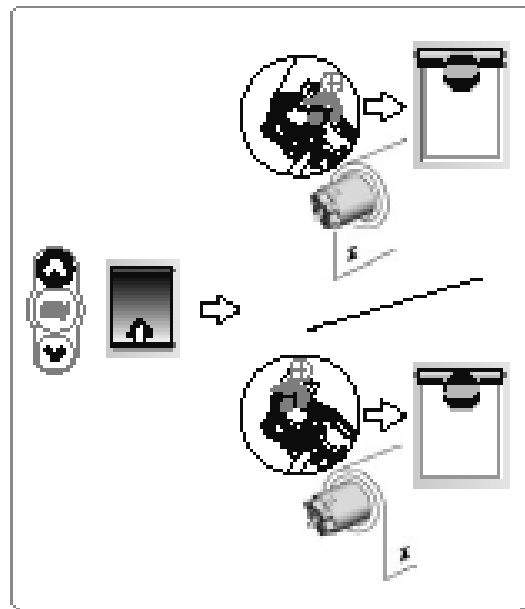
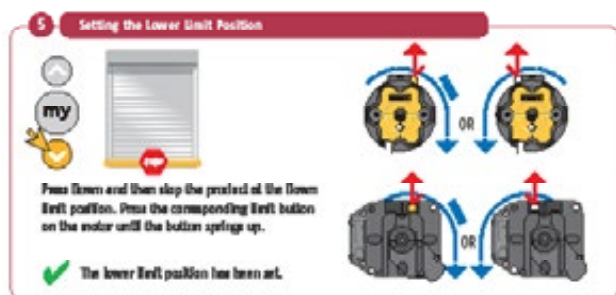
Press the control point UP button to raise the shutter to the Up limit and turn the corresponding adjustment screw to set this limit. The direction of «+» increases the shutter's travel, the direction of «-» reduces the shade's travel.



Down limit

Press the control point DOWN button to lower the shade to the Down limit and turn the corresponding adjustment screw to set this limit.

The direction of «+» increases the shutter's travel, the direction of «-» reduces the shutter's travel.



6. Operation

Up, Down, Stop

- 1) To move the shutter from a limit to the other limit, press briefly the UP or DOWN button
- 2) To stop the shutter, press the STOP button.

Telis 5 RTS Transmitter only:

1. Using the Telis 5 remote, select the appropriate channel using the CHANNEL SELECTOR BUTTON. (The LED lights will illuminate each time the Channel Selector Button is pressed, indicating the selected channel)



2. Using the UP (↑) or DOWN (↓) Buttons to open or close the window covering. If a specific position is necessary, briefly press the "MY" (stop) (M) Button to stop the window covering once position is reached.



Additional settings

Telis 5 RTS Transmitter only:

- 1a. Using the Telis 5 remote, select the appropriate channel using the CHANNEL SELECTOR BUTTON. (The LED lights will illuminate each time the Channel Selector Button is pressed, indicating the selected channel)



- 1b. Using the UP (↑) or DOWN (↓) Buttons, activate window covering to a desired position, for example halfway Open or Closed. Briefly press the "MY" (stop) (M) Button to stop the window covering once position is reached.



3. Favorite "MY" (M) position can be activated from any previous window covering position. Example: Briefly press the "MY" (M) button while window coverings in a Open or Closed position.



Note: Activating window covering to a Favorite position while already "in-motion" will require two brief presses of the "MY" (stop) button. **OR**

Window covering **MUST BE** in a stationary (Stopped) position before the "MY" favorite position can be activated.

Adding and deleting remotes

Adding a Telis 5 RTS Transmitter only:

1. Using the previously programmed Telis remote, press and hold the programming button on back of remote until window covering "jogs."



2. Using the new Telis 5 remote, select the desired channel using the CHANNEL SELECTOR BUTTON. (The LED will illuminate each time the Channel Selector Button is pressed, indicating the selected channel)



3. Using the Telis 5 remote, briefly press the programming button until the motorized window covering "jogs". The RTS motorized window covering has now learned the commands of the new Telis 5 remote.



REPLACING THE BATTERY

1. Using a small screwdriver loosen the screws on the reverse side of the remote control and remove the back cover.
2. Replace the battery with one 2430 Lithium 3V battery.

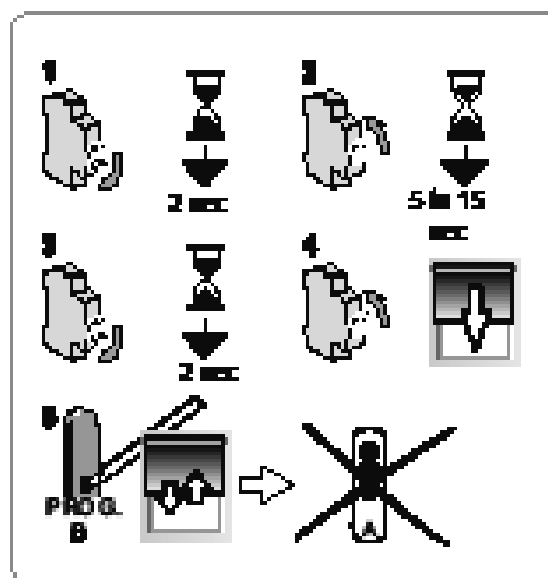


Replacement of lost remote controls

N.B.: This reset deletes all control points, but intermediate position (MY position) is retained.

N.B.: Before cutting the power, move the shade to the middle position.

- 1) Cut the power supply for 2 seconds.
- 2) Switch the power supply back on for 5 to 15 seconds.
- 3) Cut the power supply for 2 seconds.
- 4) Switch the power supply on: the shutter moves during 5 seconds (If the shutter position is an end limit, the behavior of the shutter will be a jog).
- 5) Press the RTS transmitter (B) PROG button until the shutter jogs: all the RTS transmitter are cleared and the new RTS transmitter is programmed in the motor.

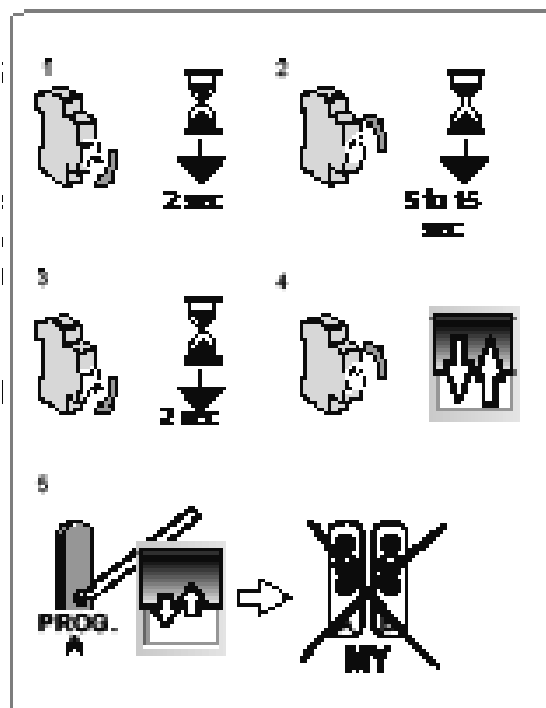


Erase the motor memory

N.B.: This reset deletes all control points, intermediate position (MY position) programmed.

N.B.: Before cutting the power, move the shade to the middle position.

- 1) Cut the power supply for 2 seconds.
- 2) Switch the power supply back on for 5 to 15 seconds.
- 3) Cut the power supply for 2 seconds.
- 4) Switch the power supply back on: the shutter moves during 5 seconds (If the shutter position is an end limit, the behavior of the shutter will be a jog).
- 5) Press the RTS control point (A) PROG button until the the shutter jogs : all the RTS control points and intermediate position (MY position) are cleared.



7. TECHNICAL DATA

Power supply	120 V ~ 60 Hz	220 V ~ 60 Hz
Radio frequency	433.42 MHz	
Safety level	Class I	
Operating temperature	-20 °C to +50 °C	
Protection rating	IP 44	

TROUBLE SHOOTING FLOW-CHART - HARDWIRED SHUTTERS

